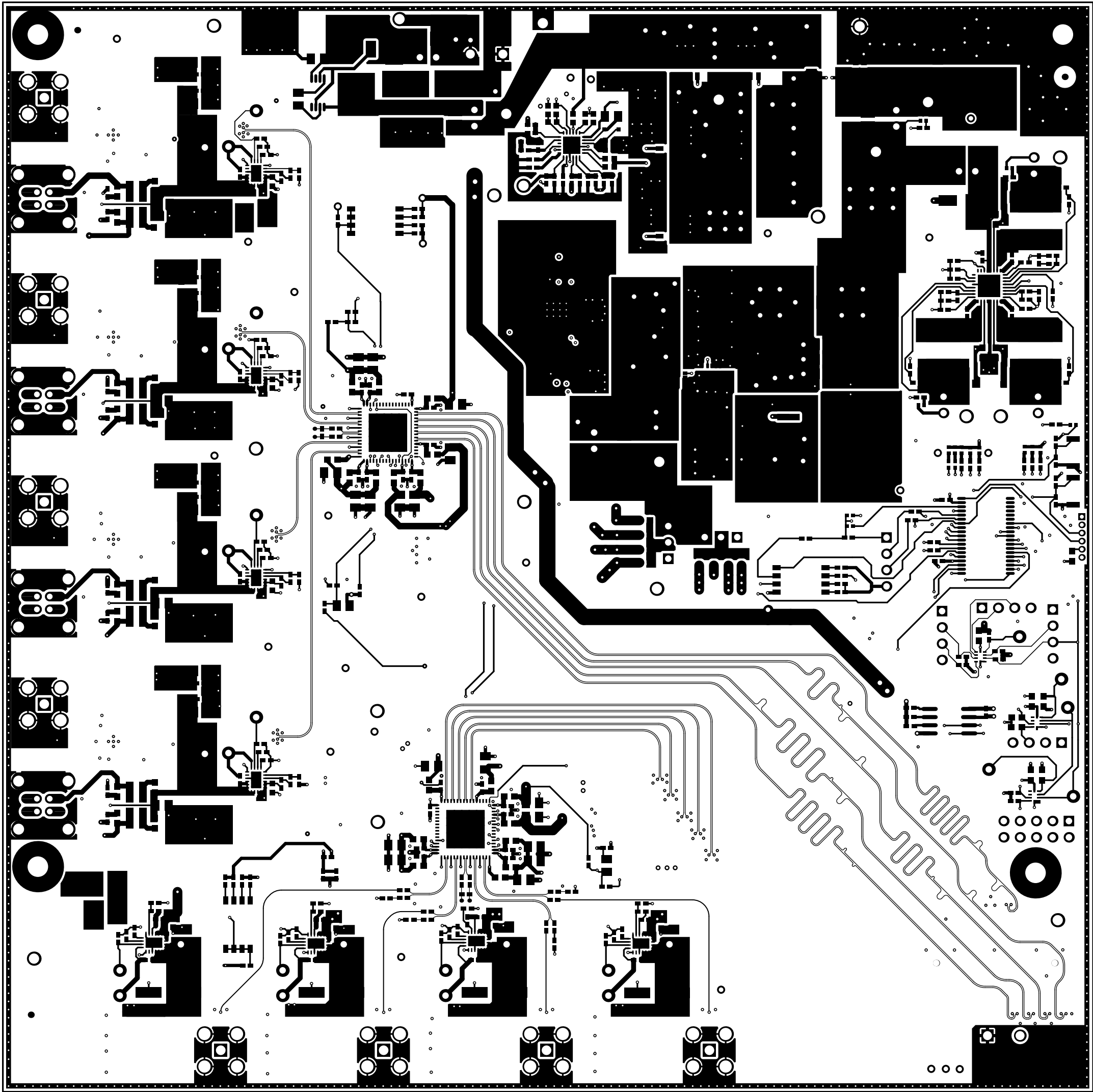
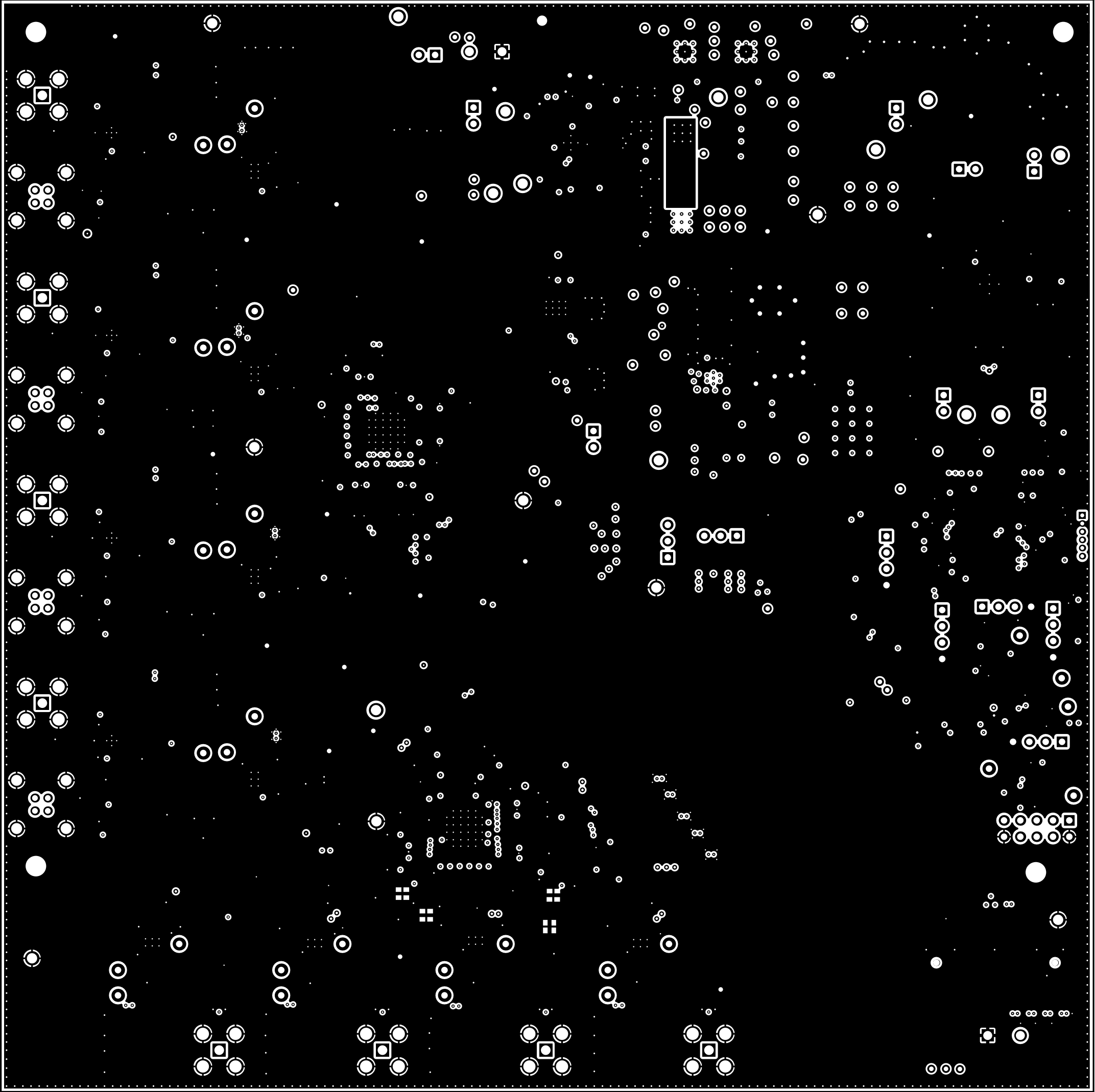


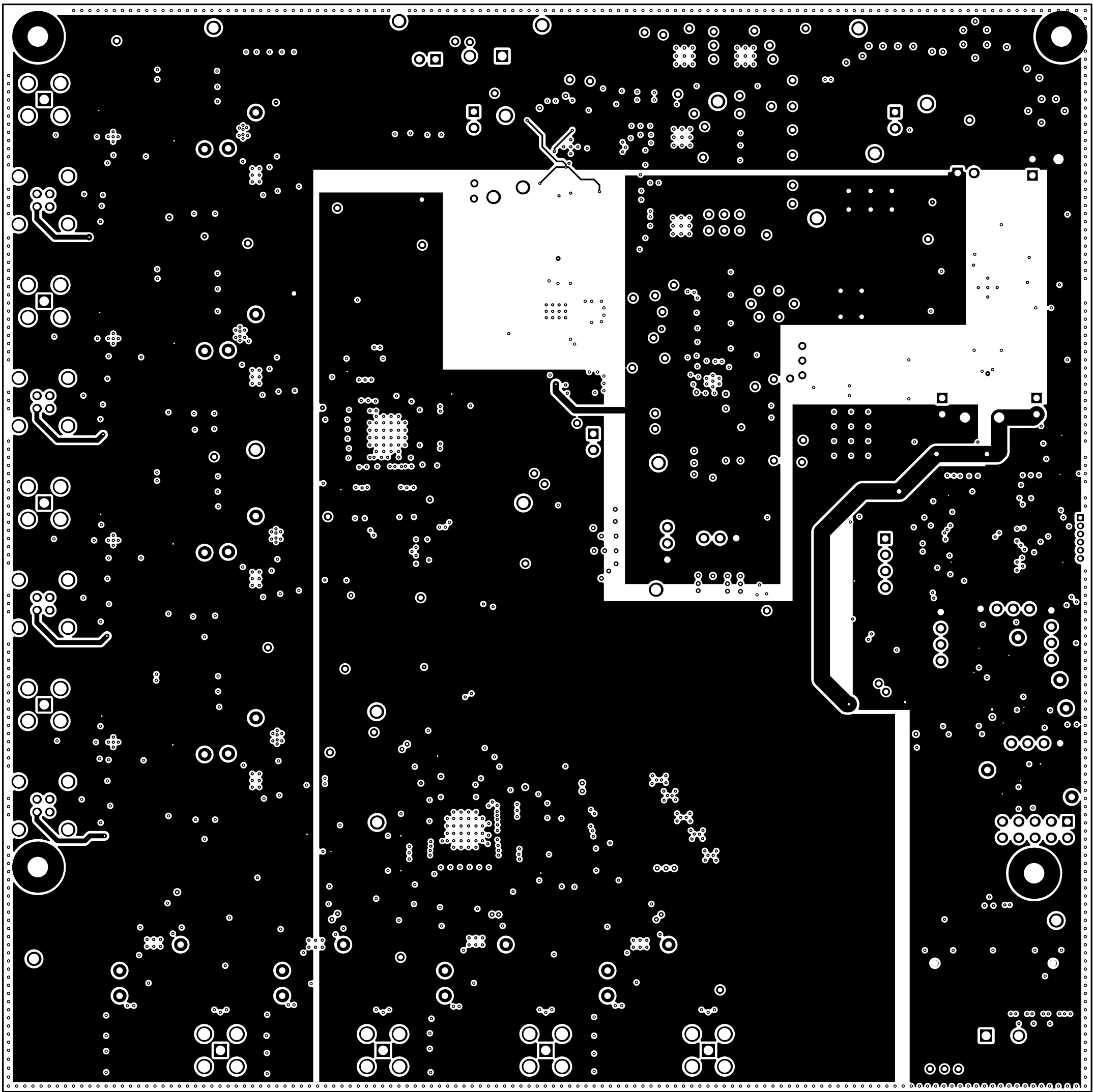
ALL ARTWORK VIEWED FROM TOP SIDE	BOARD #: 518520C	REV: C	SUN REV: Not In VersionControl
LAYER NAME = Top Solder	TID #: N/A		
PLOT NAME = Top Solder Mask	GENERATED : 1/14/2019 7:26:29 AM	TEXAS INSTRUMENTS	



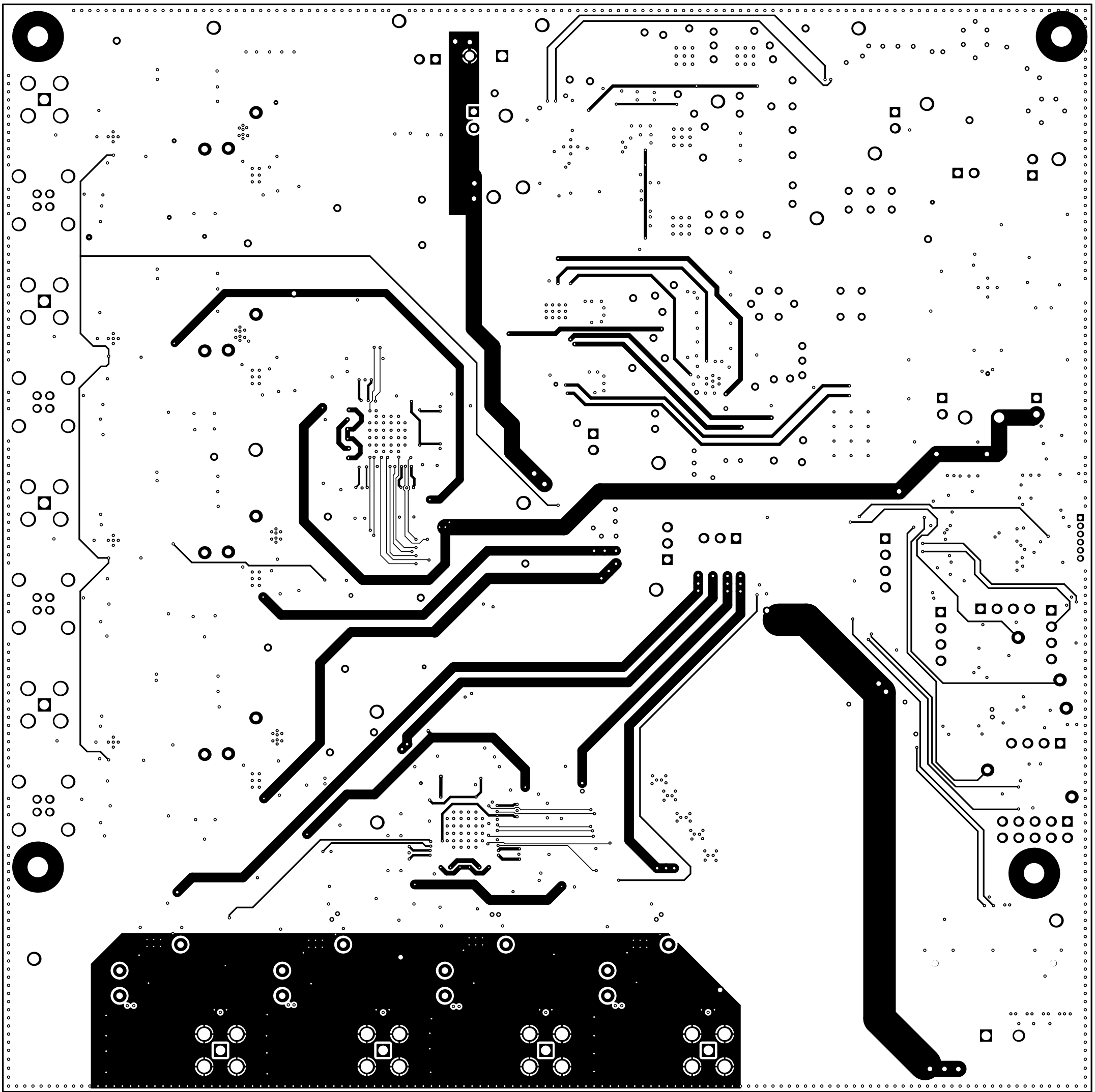
ALL ARTWORK VIEWED FROM TOP SIDE	BOARD #: 518520C	REV: C	SUN REV: Not In VersionControl
LAYER NAME = Layer 1 - Top Layer	TID #: N/A		
PLOT NAME = Top Layer	GENERATED : 1/14/2019 7:26:29 AM	TEXAS INSTRUMENTS	



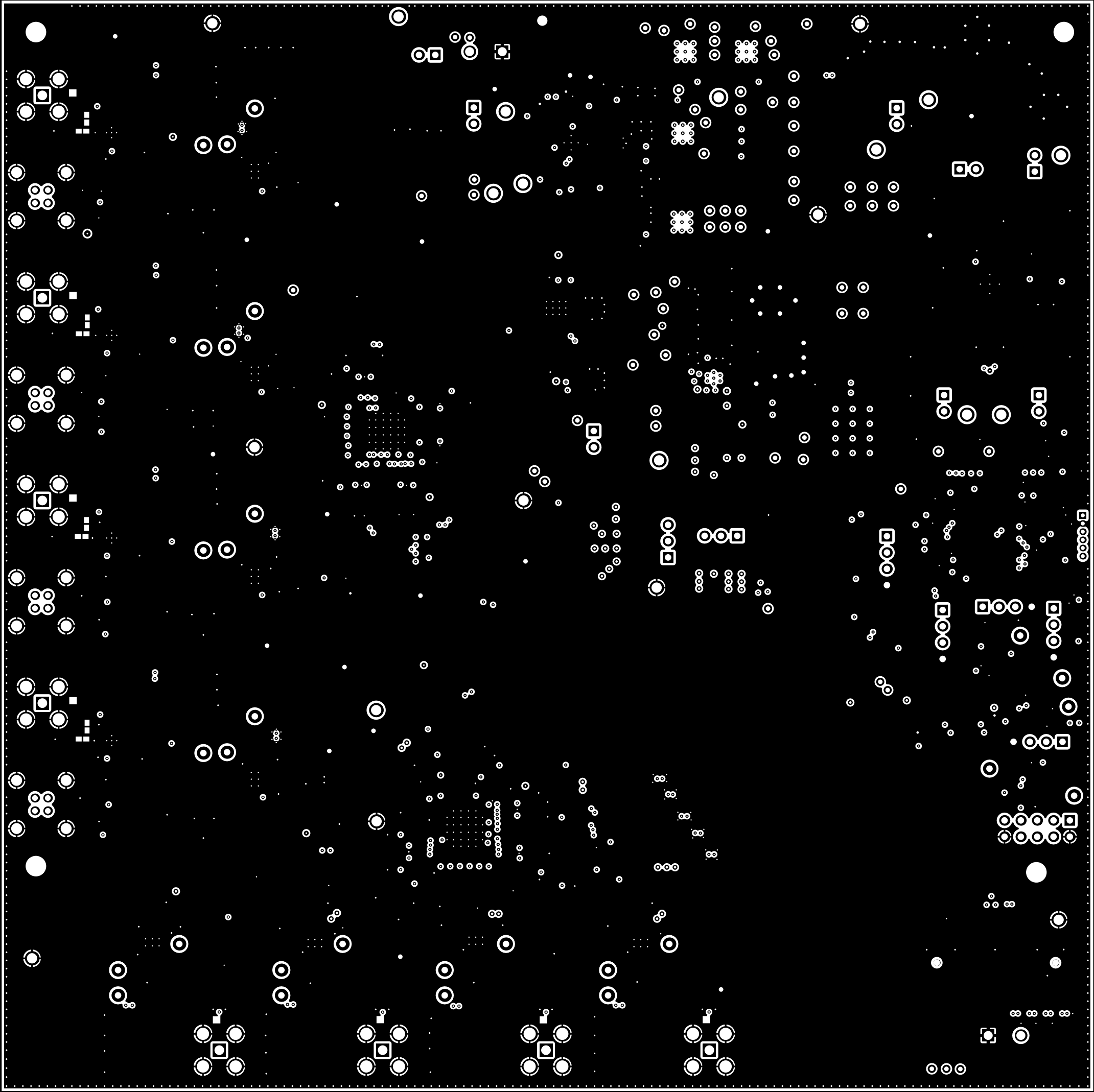
ALL ARTWORK VIEWED FROM TOP SIDE	BOARD #: 518520C	REV: C	SUN REV: Not In VersionControl
LAYER NAME = Layer 2 - GND	TID #: N/A		
PLOT NAME = Signal Layer 1	GENERATED : 1/14/2019 7:26:30 AM	TEXAS INSTRUMENTS	



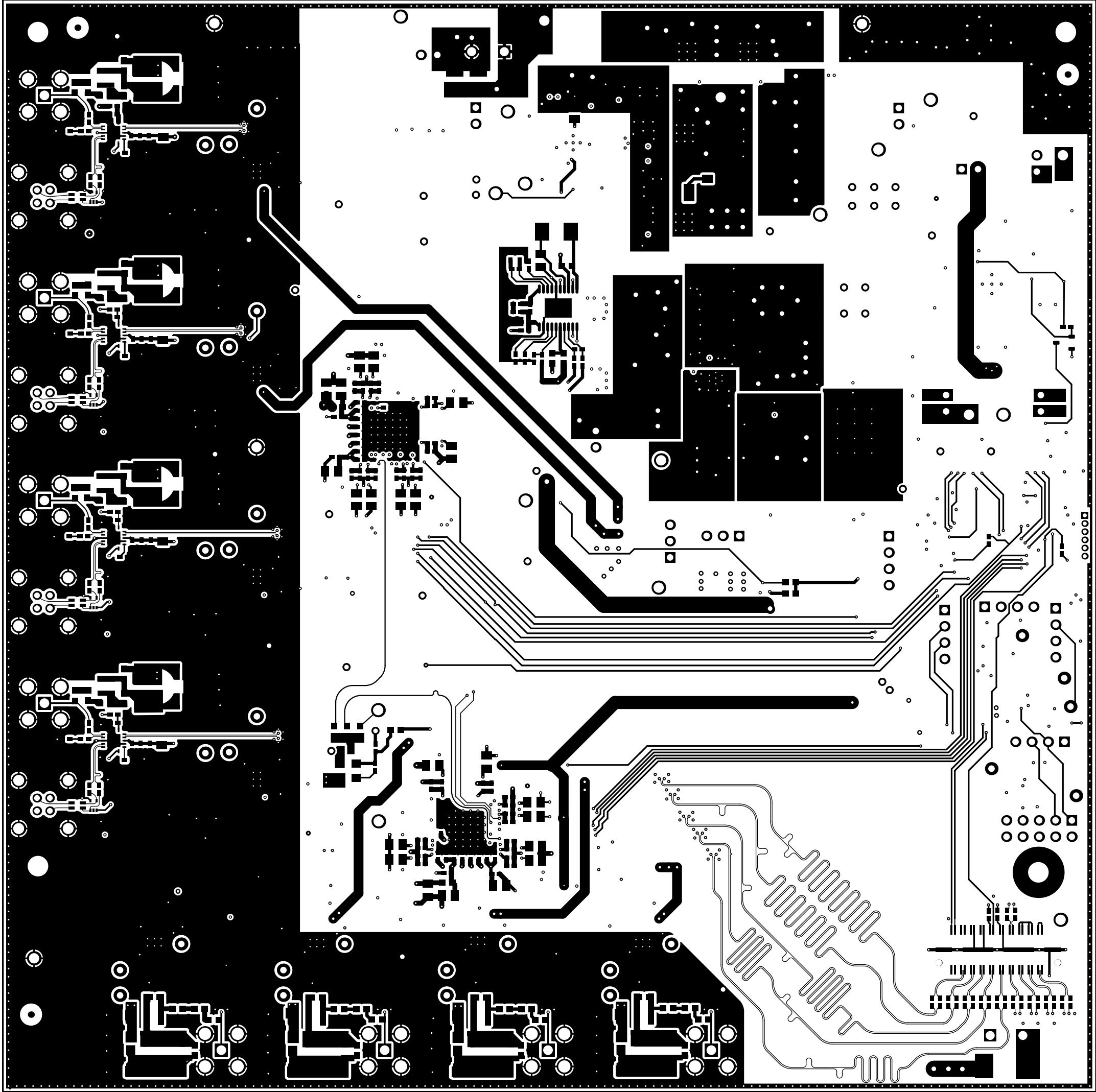
ALL ARTWORK VIEWED FROM TOP SIDE	BOARD #: 518520C	REV: C	SUN REV: Not In VersionControl
LAYER NAME = Layer 3 - PWR	TID #: N/A		
PLOT NAME = Signal Layer 2	GENERATED : 1/14/2019 7:26:30 AM	TEXAS INSTRUMENTS	



ALL ARTWORK VIEWED FROM TOP SIDE	BOARD #: 518520C	REV: C	SUN REV: Not In VersionControl
LAYER NAME = Layer 4 - Signal	TID #: N/A		
PLOT NAME = Signal Layer 3	GENERATED : 1/14/2019 7:26:30 AM	TEXAS INSTRUMENTS	

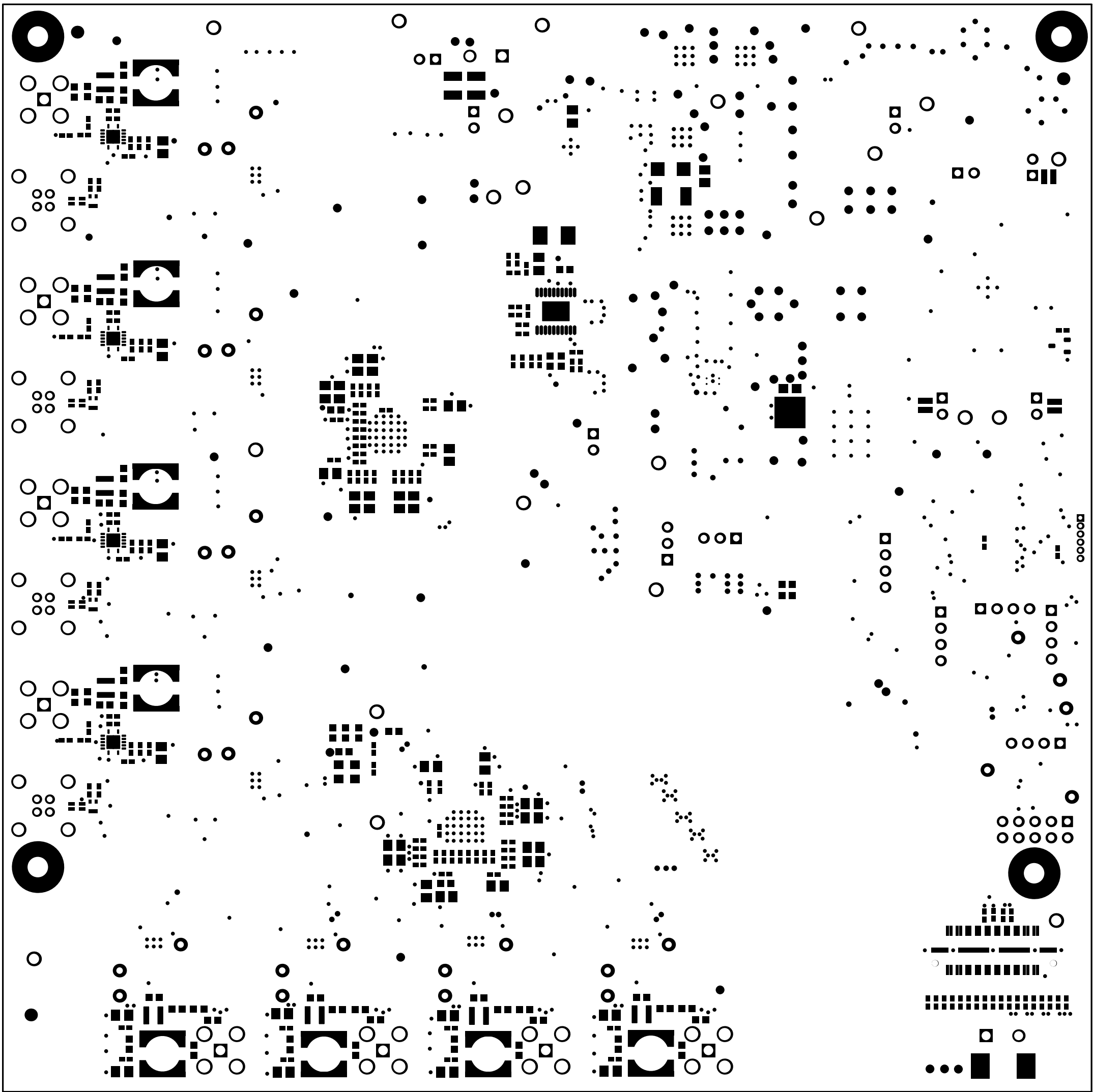


ALL ARTWORK VIEWED FROM TOP SIDE	BOARD #: 518520C	REV: C	SUN REV: Not In VersionControl
LAYER NAME = Layer 5 - GND	TID #: N/A		
PLOT NAME = Signal Layer 4	GENERATED : 1/14/2019 7:26:30 AM		TEXAS INSTRUMENTS

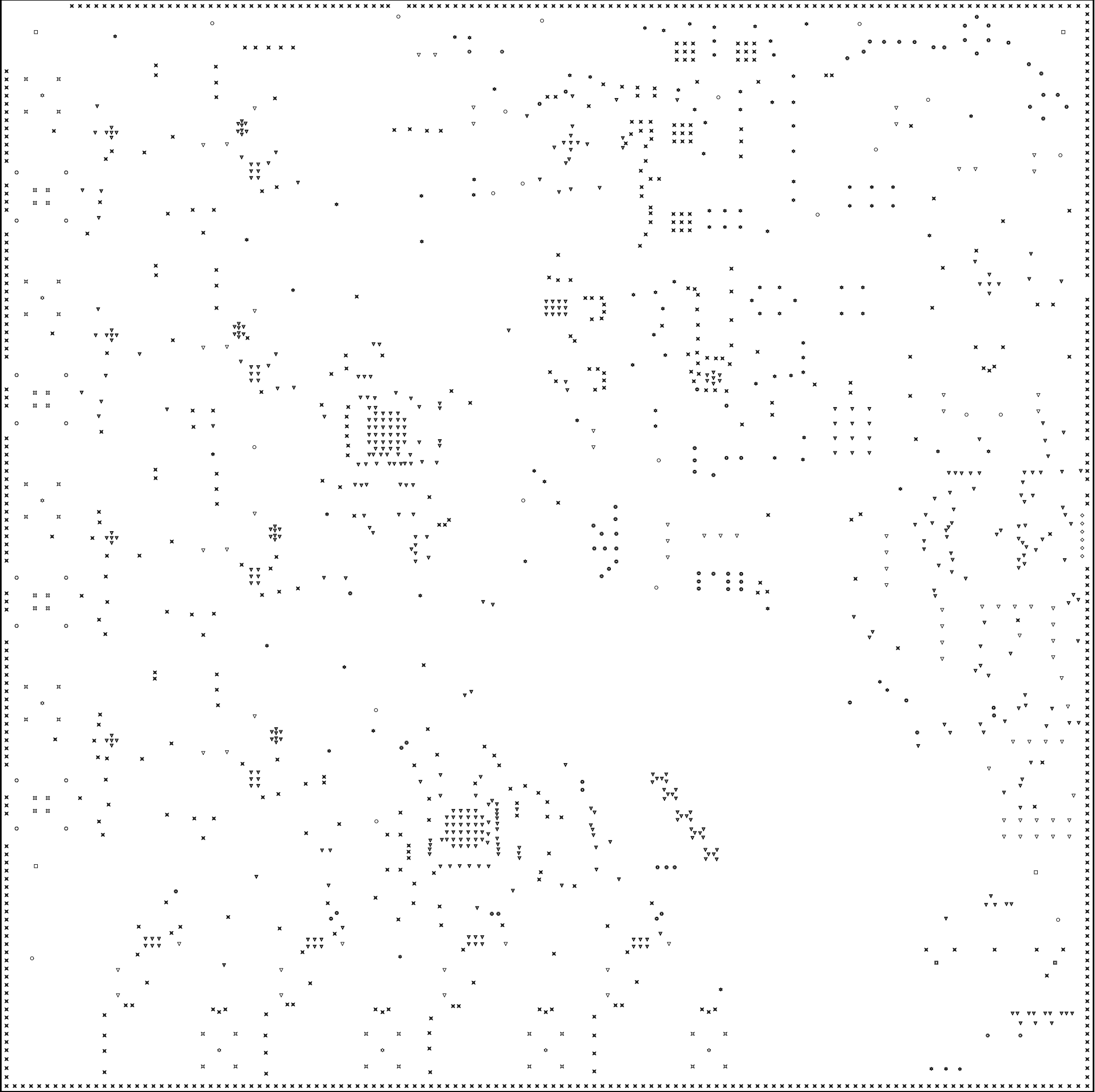


1757242

ALL ARTWORK VIEWED FROM TOP SIDE	BOARD #: 518520C	REV: C	SUN REV: Not In VersionControl
LAYER NAME = Layer 6 - Bottom Layer	TID #: N/A		
PLOT NAME = Bottom Layer	GENERATED : 1/14/2019 7:26:30 AM	TEXAS INSTRUMENTS	



ALL ARTWORK VIEWED FROM TOP SIDE	BOARD #: 518520C	REV: C	SUN REV: Not In VersionControl
LAYER NAME = Bottom Solder	TID #: N/A		
PLOT NAME = Bottom Solder Mask	GENERATED : 1/14/2019 7:26:30 AM	TEXAS INSTRUMENTS	



Symbol	Count	Hole Size	Plated
▽	499	7.87mil (0.200mm)	PTH
✕	854	10.00mil (0.254mm)	PTH
⊠	73	15.00mil (0.381mm)	PTH
◇	6	24.00mil (0.610mm)	PTH
☆	101	28.00mil (0.711mm)	PTH
⊠	16	35.43mil (0.900mm)	PTH
▽	81	40.00mil (1.016mm)	PTH
⊠	2	40.16mil (1.020mm)	NPTH
◎	4	55.12mil (1.400mm)	PTH
☆	8	59.06mil (1.500mm)	PTH
○	22	63.00mil (1.600mm)	PTH
⊠	16	66.93mil (1.700mm)	PTH
✕	32	74.80mil (1.900mm)	PTH
⊠	4	125.98mil (3.200mm)	PTH
	1718 Total		

ALL ARTWORK VIEWED FROM TOP SIDE	BOARD #: 518520C	REV: C	SUN REV: Not In VersionControl
LAYER NAME = Drill Drawing	TID #: N/A		
PLOT NAME = Drill Drawing	GENERATED : 1/14/2019 7:26:31 AM		TEXAS INSTRUMENTS



1000.00mil

6690.00mil

6690.00mil

ALL ARTWORK VIEWED FROM TOP SIDE	BOARD #: 518520C	REV: C	SUN REV: Not In VersionControl
LAYER NAME = M2 Board Dimensions	TID #: N/A		
PLOT NAME = Board Dimensions	GENERATED : 1/14/2019 7:27:10 AM		TEXAS INSTRUMENTS